



MaxPlus Non-Dry Ice Plasma Shipper

Qualified for Frozen Plasma
Products

At-a-Glance

- Qualified at below -18°C for up to 48 hours per ISTA 7D standards
- Helps protect against plasma bag breakage during shipment
- Reusable system with universal packout design
- Streamlines blood center daily operations, optimizes efficiency and minimizes staff training
- Replaceable outer shell extends life and maintains quality appearance
- Smaller and lighter design lowers shipping costs up to 15-18%



Transport of Frozen Plasma Units

The MaxPlus Non-Dry Ice Shipper is optimized for local transport or export shipping of frozen plasma units without the challenges associated with using dry ice. This shipper is qualified to maintain temperatures below -18°C for up to 48 hours per ISTA 7D standards.

Operational Efficiency

With its unique design and purpose-built pack outs, the MaxPlus Non-Dry Ice Shipper eliminates complications of dry ice packouts and reduces logistical constraints by using phase change material coolants. This facilitates operational advancements by simplifying training and reduces packaging and shipping costs.

Qualification and Validation

MaxQ's design and validation team can help select and qualify the shipper based on each blood center's unique transport and blood product needs. Blood centers can choose to conduct their own validation internally, or outsource the process to MaxQ's validation experts.





MaxPlus Non-Dry Ice Plasma Shipper

Durable and Reusable

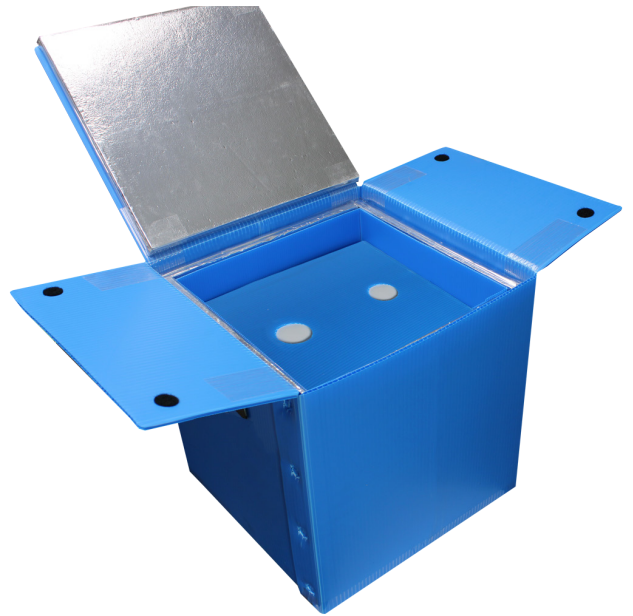
Reinforced handles and high-strength corrugated construction ensures that the shipper can withstand the rigors of third-party logistics (3PL) handling. The poly-propylene shell material is not only durable, but chemically inert. This makes it easy to clean and disinfect for ongoing reuse and continuous shipping. With this long service life, the outer shell can be easily replaced should they show signs of wear.

Simplified All-Season Packouts

To maximize operational and cost efficiencies, the MaxPlus Non-Dry Ice Shipper is qualified for universal, all-season packouts. Each shipper is equipped with the appropriate coolant packs needed to protect and maintain temperature.

Specifications

The MaxPlus Non-Dry Ice Shipper was designed by scientists specifically for blood center operations and is tested under ISTA 7D ambient profiles. Each shipper includes a comprehensive thermal performance design qualification report and packout instructions.



Blood Product	Temperature	Qualification (hours)	Capacity (units)	Dimensions L x W x H (inches)	SKU#
Standard Frozen Plasma Units	-18°C	48	1 - 9	13.75 x 13.75 x 14	PL13V48-N



sales@flymaxq.com
405-466-5629



Science in every package

packmaxq.com